

MV Station

3.5/5/7MVA

GoodWe Medium-voltage Station, a compact step-up power center, is capable of withstanding various types of environments. It offers the highest power density in an energy-efficient and safe solution comprised of MV switchgear, transformer, and LV switchgear for power transformation in large-scale solar plants. The pre-assembled and cost-effective solution is integrated into a prefabricated 20ft container, ideal for easy transportation and quick installation. The Plug-and-Play design makes grid connection exceptionally easy and rapid, and the modular architecture allows for simplified maintenance. All contained electrical components are type-tested according to strict safety standards, providing safety for operators.



Cost-saving Solution

- 20ft container for easy transportation
- A complete pre-assembled solution to minimize deployment



High Reliability & Safety

- Type-tested components of reliable quality
- Suitable for harsh environments



Easy Operation & Maintenance

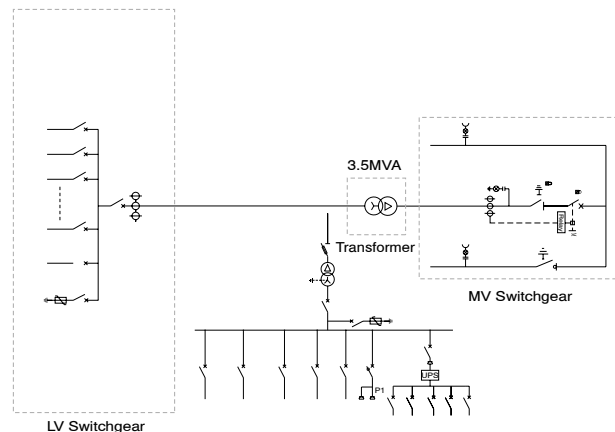
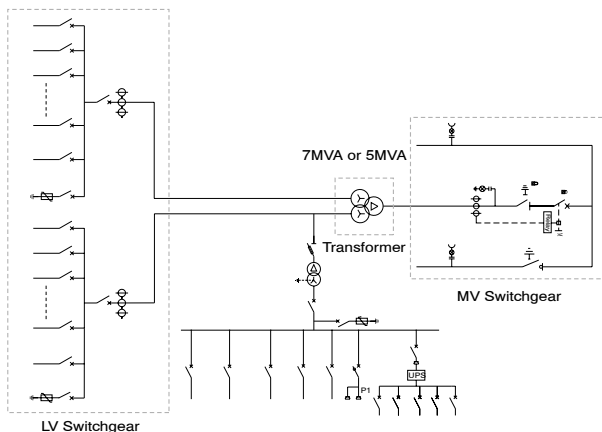
- Plug-and-play installation
- Integrated modular design simplifying maintenance



Trustworthy Adaptability

- Compatible with HT/UT inverters*
- Outstanding adaption to extreme environments

CIRCUIT DIAGRAM



*: The MCCB model of UT needs to be selected separately.

Model	GW3500K-MVS	GW5000K-MVS	GW7000K-MVS
Transformer			
Transformer Type	Oil immersed		
Rated Power (kVA)	3500kVA@40°C	5000kVA@40°C	7000kVA@40°C
Winding Connection	Dy11	Dy11-y11	Dy11-y11
LV / MV Voltage (kV)	0.8 / 10 ~ 35		
Maximum Input Current at Nominal Voltage (A)	2526	2 × 1805	2 × 2526
Frequency (Hz)	50 / 60		
Tapping range	±2 × 2.5%		
Peak Efficiency Index	≥99%		
Cooling Type	ONAN (Oil Natural Air Natural)		
Impedance	7.0% (±10%)	7.5% (±10%)	8.0% (±10%)
Oil Type	Mineral oil (PCB free)		
Winding Material	Al / Al		
Insulation Class	A		
MV Switchgear			
Insulation Type	SF6		
Rate Voltage (kV)	12.0 ~ 40.5		
Rate Current (A)	630		
Internal Arcing Fault	IAC AFL 20kA / 1s		
Qty.of Feeder	2-3 feeders (D / V / C)		
LV Room			
ACB Specification	3200A / 800Vac / 3P, 1pcs	3200A / 800Vac / 3P, 2pcs	3200A / 800Vac / 3P, 2pcs
MCCB Specification	250A / 800Vac / 3P, 14pcs	250A / 800Vac / 3P, 20pcs	250A / 800Vac / 3P, 28pcs
Protection			
AC Input Protection	Circuit breaker		
Transformer Protection	Oil-temperature, oil-level,oil-pressure		
LV Overvoltage Protection	AC Type I + II		
General Data			
Dimensions (W × H × D mm)	6058 × 2896 × 2438		
Approximate Weight (t)	<22		
Operating Temperature Range (°C)	-25 ~ +55		
Auxiliary Power Supply	5kVA / 400V (Optional: max. 20kVA)		
Ingress Protection Rating	IP54		
Relative Humidity	0 ~ 95%		
Max. Operating Altitude (m)	1000 (Optional: 2000)		
Anti-corrosion Class	C4H (Optional: C5M)		
Communication	Standard: RS485, Ethernet Optional: Optical Fiber		
Compliance	IEC 60076, IEC 62271-200, IEC 62271-202, IEC 61439-1 / 2, EN50708-1		

*: Please visit GoodWe website for the latest certificates.