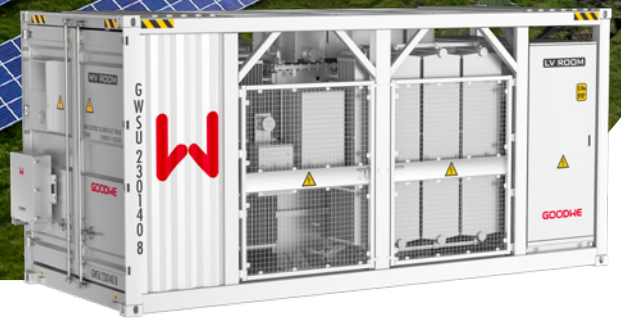


MV Station

9.152MVA

The GoodWe Medium-voltage Station is a compact step-up power center engineered to endure diverse environmental conditions. It boasts the highest power density among its counterparts, delivering energy-efficient and secure power transformation for large-scale solar plants. Comprising MV switchgear, transformer, and LV switchgear, this solution is pre-assembled and cost-effective, housed within a prefabricated 20ft container for convenient transportation and swift installation. Its Plug-and-Play design ensures seamless grid connection, while its modular architecture simplifies maintenance procedures. All enclosed electrical components undergo rigorous type-testing, adhering to stringent safety standards for operator security. Capable of full-power operation at temperatures up to 40°C, it guarantees reliable performance in demanding settings.



Cost-saving Solution

- 20ft container for easy transportation
- A complete pre-assembled solution to minimize deployment



High Reliability & Safety

- Type-tested components of reliable quality
- Suitable for harsh environments



Easy Operation & Maintenance

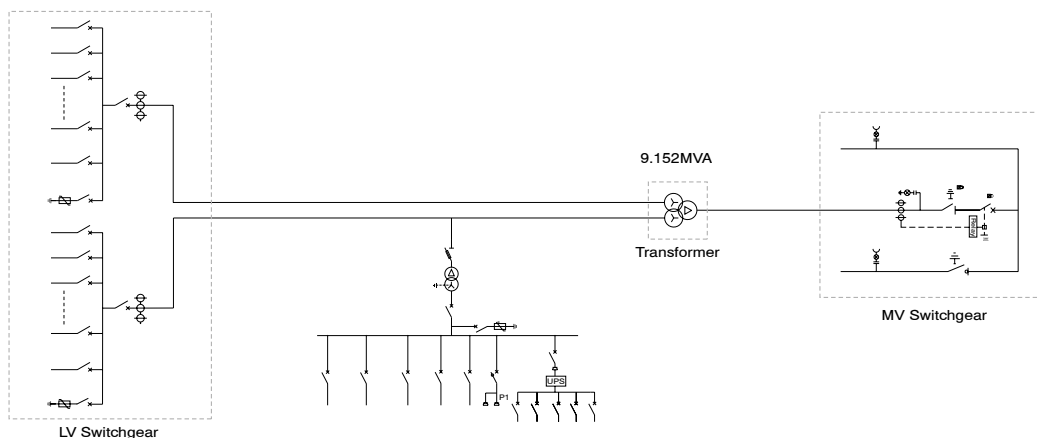
- Plug & play installation
- Integrated modular design simplifying maintenance



Trustworthy Adaptability

- Compatible with GoodWe UT Series inverter
- Outstanding adaption to extreme environments

CIRCUIT DIAGRAM



Model		GW9100K-MVS
Transformer		
Transformer Type	Oil immersed	
Rated Power (kVA)	9152kVA@40°C	
Winding Connection	Dy11 - y11	
LV / MV Voltage (kV)	0.8 / 20 ~ 35	
Maximum Input Current at Nominal Voltage (A)	2 × 3302	
Frequency (Hz)	50 / 60	
Tapping range	±2 × 2.5%	
Peak Efficiency Index	≥99%	
Cooling Type	ONAN (Oil Natural Air Natural)	
Impedance	9.5% (±10%)	
Oil Type	Mineral oil (PCB free)	
Winding Material	Al / Al	
Insulation Class	Class A	
MV Switchgear		
Insulation Type	SF6	
Rate Voltage (kV)	24 ~ 40.5	
Rate Current (A)	630	
Internal Arcing Fault	IAC AFL 20kA / 1s	
Qty. of Feeder	3 feeders (DCV, Optional: CCV)	
LV Room		
ACB Specification	4000A / 800Vac / 3P, 2pcs	
MCCB Specification	320A / 800Vac / 3P, 26pcs	
Protection		
AC Input Protection	Circuit breaker	
Transformer Protection	Oil-temperature, oil-level, oil-pressure	
LV Overvoltage Protection	AC Type I + II	
General Data		
Dimensions (W × H × D mm)	6058 × 2896 × 2438	
Approximate Weight (t)	<25	
Operating Temperature Range (°C)	-25 ~ +55 (>40°C derating)	
Auxiliary Power Supply	5kVA / 400V (Optional: max. 50kVA)	
Ingress Protection Rating	IP54	
Relative Humidity	0 ~ 95% RH	
Max. Operating Altitude (m)	1000 (Optional: 2000)	
Anti-corrosion Class	C4H (Optional: C5M)	
Communication	RS485, Ethernet, Optical Fiber (Optional)	
Compliance	IEC 60076, IEC 62271-200, IEC 62271-202, IEC 61439-1/2, EN50708-1, CE	

*: Please visit GoodWe website for the latest certificates.

*: As a part of our policy of continuous improvement, we reserve the right to alter design and specifications without further notice.