

Driving the World's Smart Energy Future



Scan and Follow GoodWe

Disclaimer

The technical data above mentioned may be modified in order to reflect continuous technical innovation and improvements achieved by GoodWe's R & D team. GoodWe has the sole right to make such modification at any time without further notice. GoodWe's customers have the right to request the latest version of GoodWe product datasheets and any commercial contracts that may be signed will be based on the most recent version of the datasheet at the moment of signing the contract.

Copyright © GoodWe Technologies Co., Ltd. 2025. All rights reserved.



EcoSmart Commercial

Boost Your Business with
Economical and Ecological Energy Solutions

Sustainable Energy Solutions for Business

Installing a PV energy storage system can provide significant economic, environmental and operational benefits for large and small businesses. GoodWe is committed to creating a series of innovative products and solutions that meet the diverse needs of business owners.



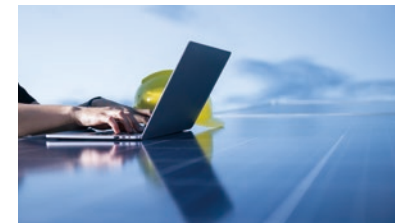
Lower Energy Costs

- Optimize self-consumption of PV power
- Reduce peak power demand to grid
- Adapt to dynamic electricity tariffs



Ensure Stable Operations

- Increase grid independence
- Facilitate uninterrupted power supply
- Secure required backup capacity



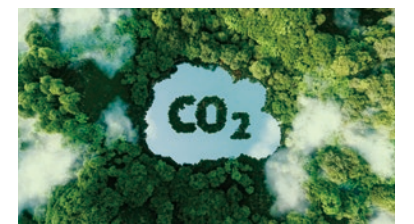
Earn Additional Revenue

- Grid services
- Energy arbitrage
- Capacity reserve



Reduce CO₂ Footprint

- Contribute to a green future
- Support a positive brand reputation
- Benefit from government subsidies



Discovering GoodWe EcoSmart Commercial

GoodWe EcoSmart Commercial solutions are designed to empower businesses with reliable, efficient, and sustainable energy systems. By combining intelligent energy management with cutting-edge inverters, high-performance batteries, advanced energy management systems (EMS), meters, and communication accessories, these solutions deliver unmatched versatility and efficiency. Whether it's peak shaving, backup power, or solar energy integration, GoodWe EcoSmart Commercial offers a comprehensive range of solutions to help commercial and industrial facilities optimize energy costs, ensure uninterrupted operations, and achieve sustainability goals.



Peak shaving and demand charge management



Industry-leading safety features



Scalable and flexible system design



Smart operation modes and monitoring systems

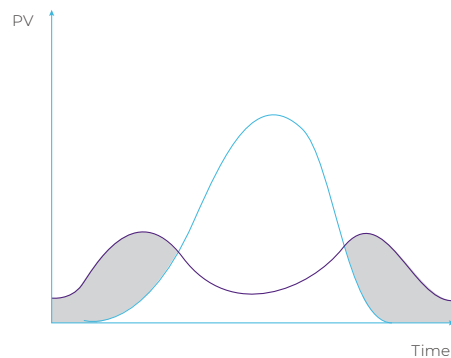


SolarGo

SEMS

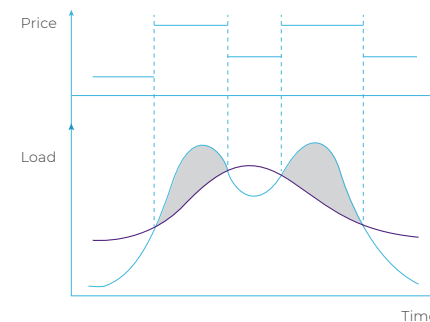
Maximized Benefits with Intelligent System Operation Settings

Self-Consumption



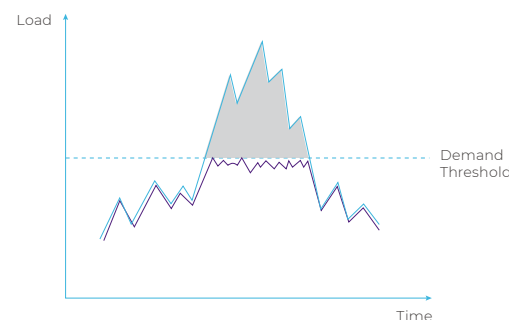
Save electricity cost by optimizing the system for self-consumption of generated PV power.

Time-of-Use (ToU)



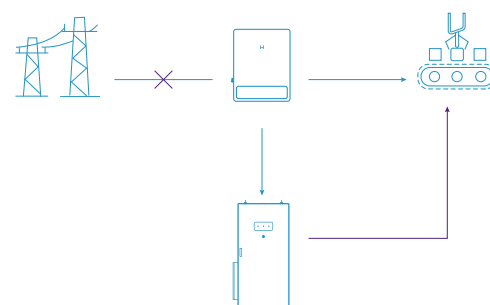
If you are subscribing to a variable electricity pricing scheme, set the PV system to draw electricity from the grid when prices are low.

Peak Shaving



Reduce electricity usage from the grid at times of high demand and avoid additional grid fees for exceeding peak power limits.

Backup



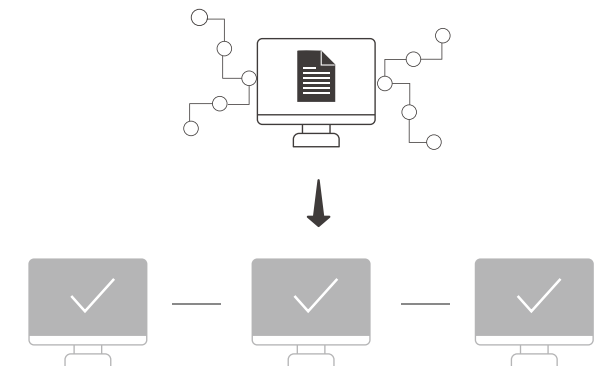
In case of a grid outage, the system draws power from the battery bank to provide electricity to critical loads.



Compatibility with 3rd Party Providers of EMS and VPP

Intelligent software solutions are becoming increasingly important for optimizing storage systems based on individual requirements and external conditions.

- An intelligent Energy Management System (EMS) enables effective system integration of PV-systems, heat-pumps, EV chargers and other loads that can be controlled.
- As part of a virtual power plant (VPP), a business can or participate in energy trading or be financially rewarded for grid support services that maintain grid stability,



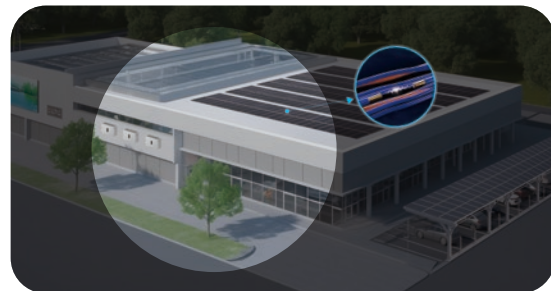
Key Benefits

- Optimized Energy Use
- Seamless System Integration
- Smart Load Control
- Real-Time Monitoring & Analytics
- AI-Powered Scheduling
- Remote Management & Upgrade
- Dynamic Tariff Ready

GoodWe follows an open protocol strategy to support compatibility with local EMS as well as VPP players, ensuring availability of solutions across different regions.

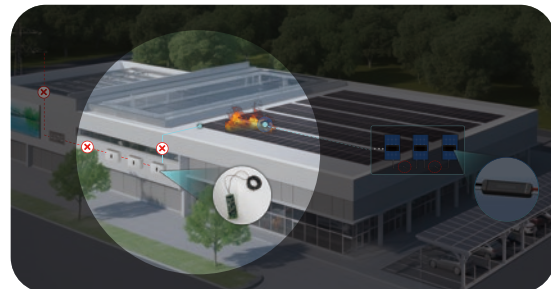
| Ensured Electrical Safety

Multi-layer Protection for Inverters



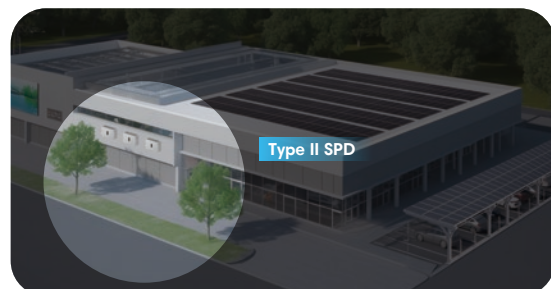
AI-driven AFCI 3.0 for Active Safety

- Detects faults in just 50ms
- Ensures >99% accurate fault detection
- Cuts power within 500ms to prevent hazards



Rapid Shutdown 2.0 Solution

- Achieves quick system shutdown in <30s
- Ensures 100% compliance with regulatory safety standards



SPD Protection Against Lightning Strike

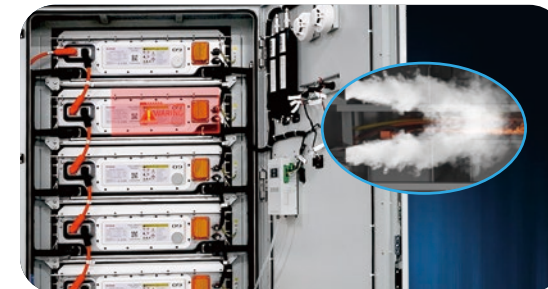
- Discharges surge energy within <25 nanoseconds
- Withstands voltage surges up to 40kA (Type II SPD)
- Reduces system failure rate by >90%

Multi-layer Protection for Batteries



Cell-level Protection

- Overcharge/overdischarge protection
- Overvoltage/undervoltage protection
- Over-temperature protection



Pack-level Protection

- Cell risk prediction
- Thermal runaway warning
- Pack-level humidity monitoring with auto-dehumidification



Cabinet-level Protection

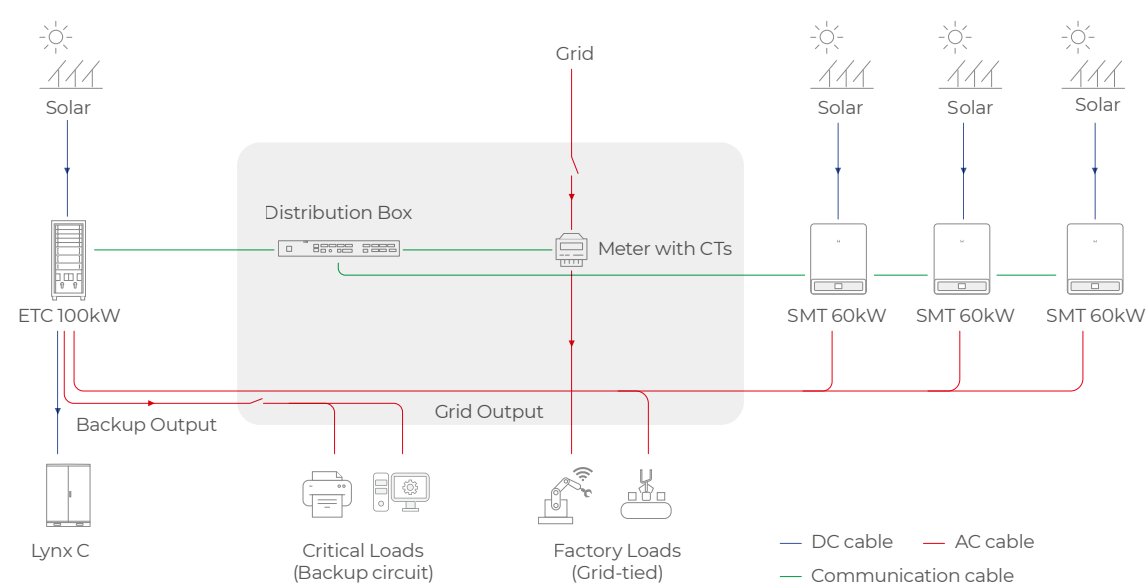
- Aerosol-based fire extinguishing
- Smoke and temperature sensing
- Integrated pressure relieve valve

Example: Efficient and modular energy storage system that perfectly fits individual needs

Small factory with high electricity costs and peak power demands that exceed grid-limit

Example: Convenient all-in-one energy storage solution combined with string inverter for additional power

Hotel with diminishing profitability due to rising electricity prices and challenges with an unstable grid



Benefits

- Optimized self-consumption ratio, resulting in lower electricity bills
- Facilitated peak load shaving, thereby reducing utility fees
- Flexibility for future growth and evolving energy needs
- Reduced carbon footprint

Recommended Products



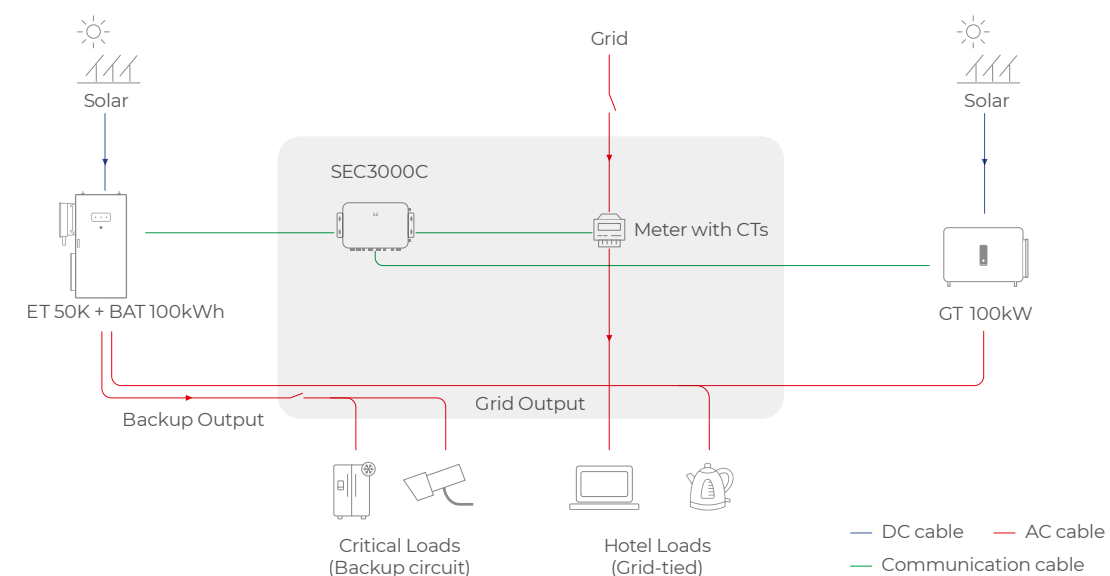
SMT 60kW



ETC 100kW



Lynx C 101kWh



What to Expect

- Lower electricity bills due to optimized self-consumption
- Uninterrupted power supply for better customer service
- Implementing green policy and positive brand-building
- Easy planning and installation based on all-in-one solution

Recommended Products



GT 100kW



ET 50K + BAT 100kWh



SEC3000C

Case: Retrofit Solution at GoodWe China Facility

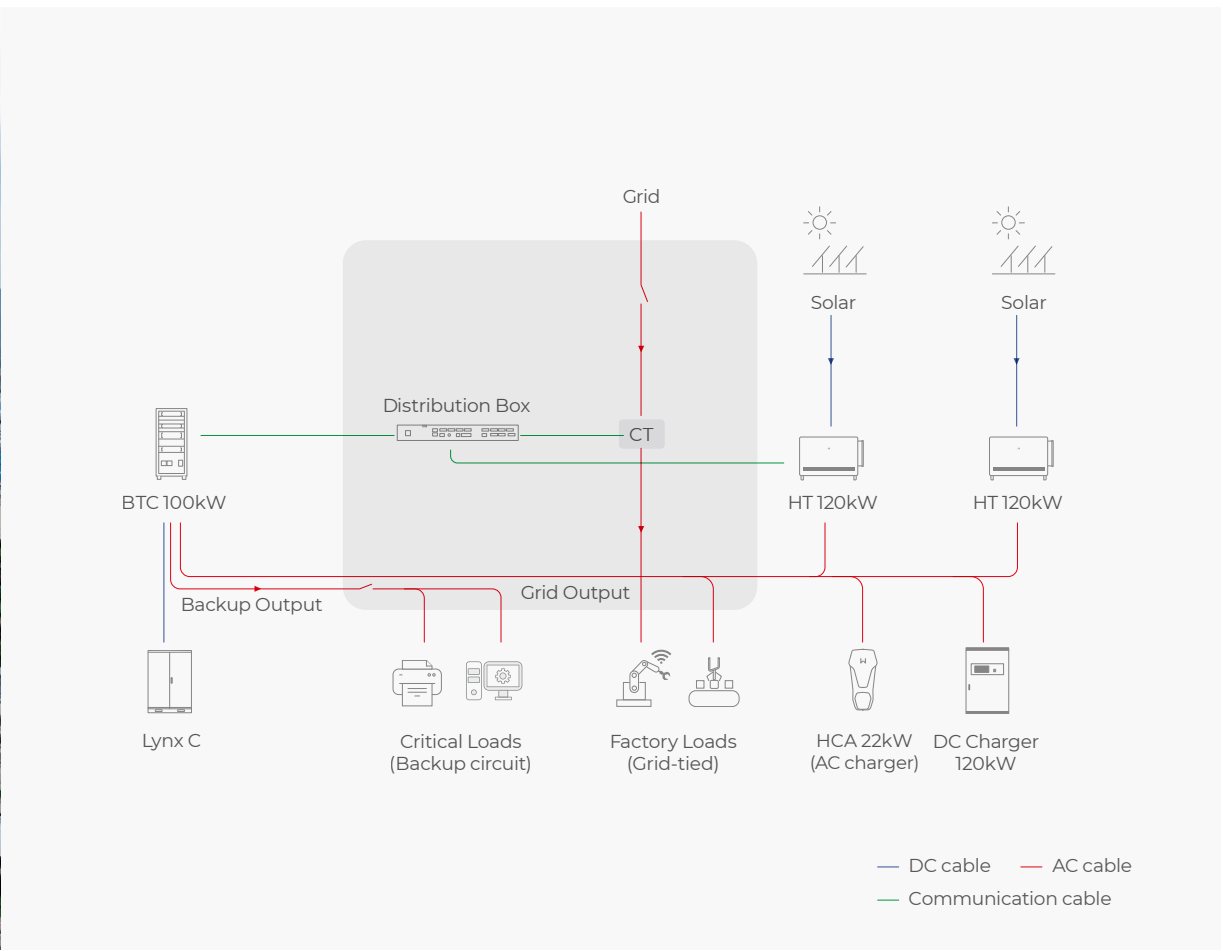


*GoodWe Guangde Industrial Park is located in the southeast Anhui Province, China.

The GoodWe GuangDe Industrial Park serves as the primary manufacturing base for GoodWe. It is here that we have developed a microgrid solution that seamlessly integrates PV systems, energy storage systems, EV chargers, and adjustable loads. This innovative solution showcases our ability to retrofit existing solar systems in C&I scenarios, providing a comprehensive and efficient energy management solution.

Solution

PV Solution: BIPV product Galaxy Series, Multiple string inverter HT 120kW
Storage Solution: Multiple retrofit battery Inverter BTC 100kW, Battery system Lynx C (156kWh)
Carport Solution: BIPV product Polaris Series, 6 X 22kW AC charger, 2 X 120kW DC charger



What to Expect

- High PV energy self-consumption rate
- Full-site control for optimized energy utilization
- Uninterrupted power supply for critical loads
- EMS supported

Recommended Products



C&I Product Offering

On-grid Inverter



| SDT G3 25-40kW



| SDT G3 50kW



| SMT 80kW



| GT 100-125kW



| HT 100-120kW



| HT (1500V) 225/250kW

Energy Storage Inverter & STS



| ET 15-30kW
Hybrid inverter | 2/3 MPPTs



| ET 40/50kW
Hybrid inverter | 3/4 MPPTs



| STS
Static Transfer Switch

All-in-one System



- | ESA 125kW/261kWh
- Integrated with self-developed PCS, BMS & EMS
 - Scalable up to 1.87MW/3.91MWh
 - Six-level active & passive fire protection
 - Support storage+PV solution

Energy Storage Battery



| BAT 51.2/56.4kWh



| BAT 102.4/112.6kWh



| Lynx C 60kWh



| Lynx C 101-156kWh

Data Logger & Communication Box



| Ezlogger3000C



| SEC3000C

Smart Dongle & Smart Meter



| Wi-Fi Kit-20 and WiFi/LAN Kit-20



| Ezlink3000



| GM330

| Real Projects, Real Impact



| 200 kW 📍 Champniers, France



| 60 kW / 120 kWh 📍 Kraków, Poland



| 1.25 MW 📍 Bloemfontein, South Africa



| 30 kW / 80 kWh 📍 Kenya, East Africa



| 2.2 MW 📍 Shinan, Korea



| 60 kW 📍 Canarias, Spain



| 40 kW / 81.7 kWh 📍 Grimsby, UK

GoodWe at a Glance



GoodWe is a world-leading PV inverter manufacturer and smart energy solution provider established in 2010. The company has around 6,000 employees worldwide and has a track record of over 100 GW of installations in over 100 countries and regions. GoodWe offers an extensive range of products and solutions tailored for residential, commercial and industrial, and utility-scale PV systems, delivering reliable and high-performance solutions across its entire portfolio. For the second quarter of 2025, GoodWe has been named as a Global Tier 1 Power Inverter Manufacturer by BloombergNEF (BNEF).

Why Choose GoodWe



From high-performance inverters to advanced energy storage systems and cutting-edge monitoring platforms, GoodWe provides a seamless integration of components designed to maximize efficiency and reliability. With a one-stop-shop solution, GoodWe ensures that businesses can meet their energy needs with ease, all while contributing to a sustainable future. Choose GoodWe for a holistic approach to commercial energy solutions that deliver exceptional performance and peace of mind.

Global Presence with Local Service



4 Production Facilities

China: Suzhou, Guangde, Shunde
Vietnam: Haiphong

5 R&D Centers

China: Suzhou, Shenzhen, Wuhan, Nanjing, Shunde



Customized Solutions

Unlock the full potential of PV energy with tailor-made solutions designed to meet customer's unique needs



Comprehensive Services

Draw on our pre- and after-sales expertise for a smooth and hassle-free experience



Smart Monitoring

Stay in control by utilizing smart monitoring platforms to conveniently track and monitor system performance



Ensured Investment Security

Benefit from reliable performance, robust warranties, and comprehensive technical support, ensuring businesses to achieve maximum returns on their energy storage investment